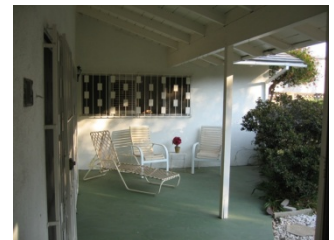
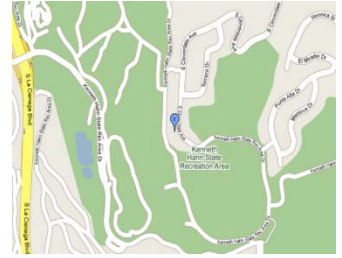


Million Dollar Neighborhood
4241 S. Cloverdale Avenue * Baldwin Vista
A Rare Opportunity in this Secluded Enclave



Previously asking \$750,000

Reduced to \$599,000!!!

Pre-foreclosure. No Short Sale.

On a Secluded Hilltop Cul-de-Sac Surrounded by Acres of Beautiful Green Belt Highlands
Surface Street Close to Beverly Hills, Downtown, LAX and USC

3 Bedrooms * 3 Baths * Large Family Room * 2 Fireplaces * Breakfast/Dining Room
Central Heat * 2 Car Garage * Large Kitchen * Dishwasher * Laundry Room
Mobility Improvements * Close to Shopping * Wheelchair Friendly
Private Patio & Garden * 2,189 sq ft * 8,960 sq ft Lot
MLS#09-376007

“This is a great opportunity to get into a terrific neighborhood a good price”



Rodeo Realty Agent:
Drew de la Houssaye
Cell (310) 903-7866
Fax (310) 300-0635
Drew@BelAir-Capital.com
BelAir-Capital.com
Dept. of Real Estate
License #01518883



The information contained in this flyer may be unverified.
Potential buyers should take all steps necessary to confirm the accuracy of the information contained herein.